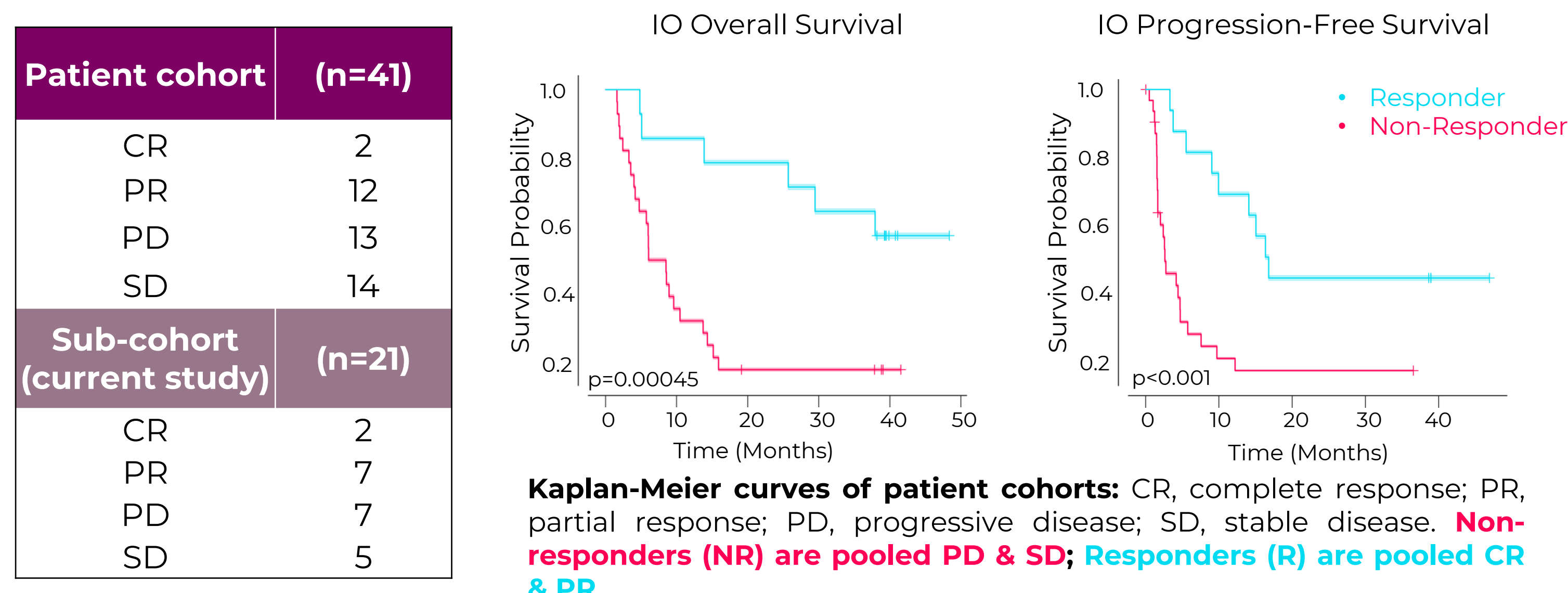
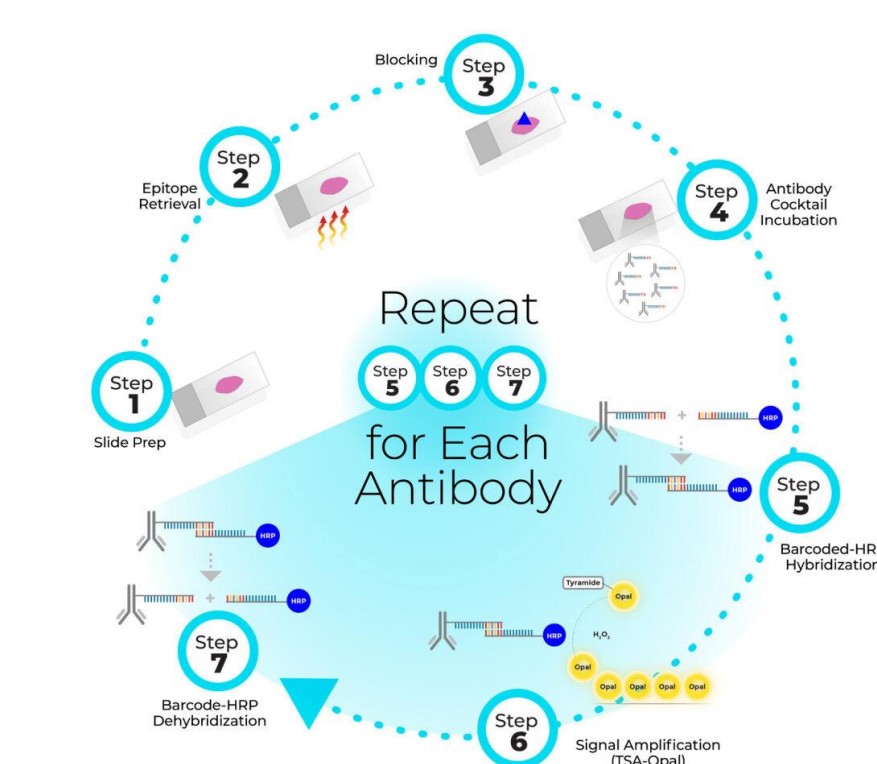


NSCLC immunotherapy study (Prospective)

Lung cancers are the leading cause of cancer incidence and mortality, with a 5-year survival of ~20%. Treatment with immune checkpoint inhibitors has led to durable and prolonged survival, but only a subset of patients remains responsive. Additional biomarkers are needed to better predict which patients will respond to or develop resistance against immune checkpoint inhibitor (ICI) therapies. In this study, we phenotyped pretreatment biopsies from non-small cell lung cancer (NSCLC) patients enrolled in a single-agent Nivolumab clinical trial. We first deployed customizable PhenoCode™ Signature Panels (PSP) for high-throughput profiling of the tumor immune-contexture and macrophage (M1 & M2) polarization utilizing the Phenomager® HT 2.0 platform. Our analyses revealed key differences between the proximity of M1 and M2 macrophages to tumor cells in the responder and non-responder groups. To further investigate, M1 and M2 functional states we performed deep spatial phenotyping using a 57-plex PhenoCode Discovery panel on the PhenoCycler®-Fusion 2.0 platform. Our study underscores the pivotal role of advanced spatial phenotyping in unraveling the complexities of macrophage polarization states and metabolism dynamics and their influence on treatment response.



Spatial 2.0 - High-throughput to High-plex exploration

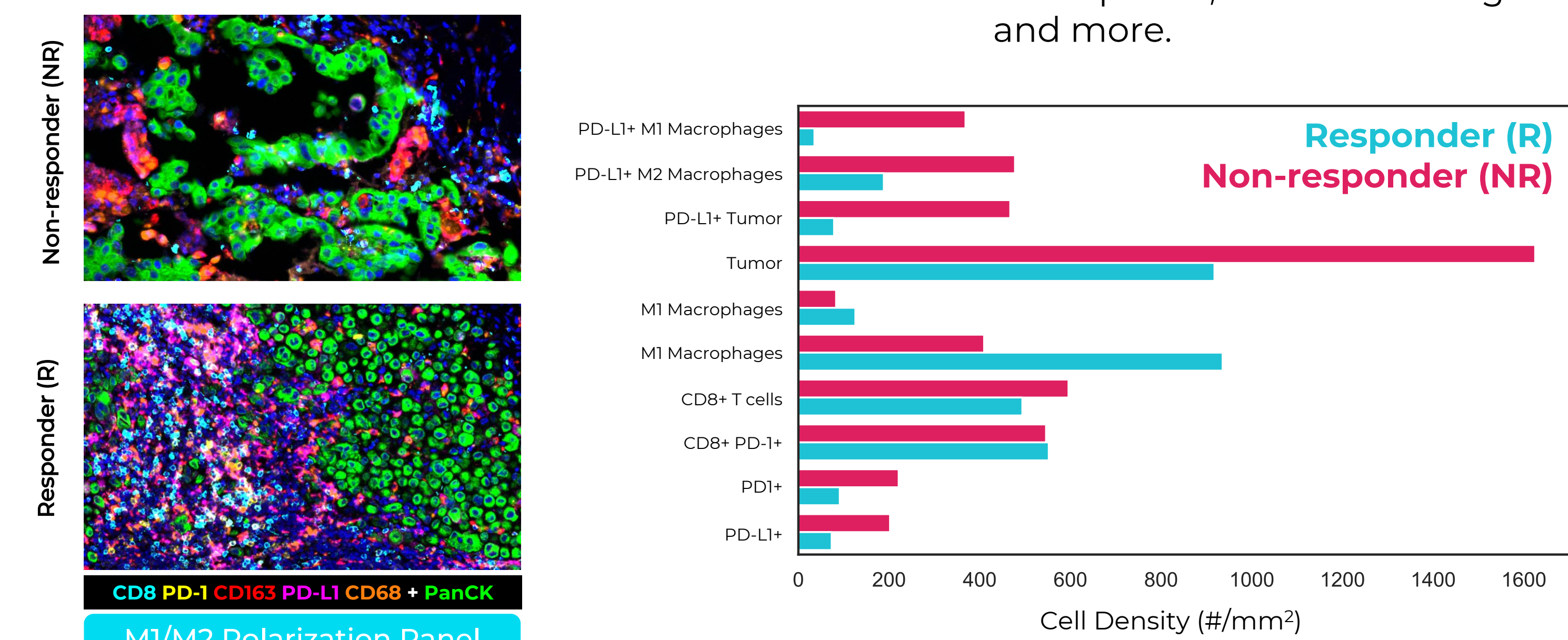


PhenoCode Signature Panels use Akoya's barcode-based antibody labeling chemistry and are validated for the **Phenomager HT 2.0** workflow. Featuring a flexible design component that allows for the easy integration of a novel checkpoint or immune cell marker, these panels offer 3-fold faster assay development and optimization times when compared to other custom 6-plex panels.

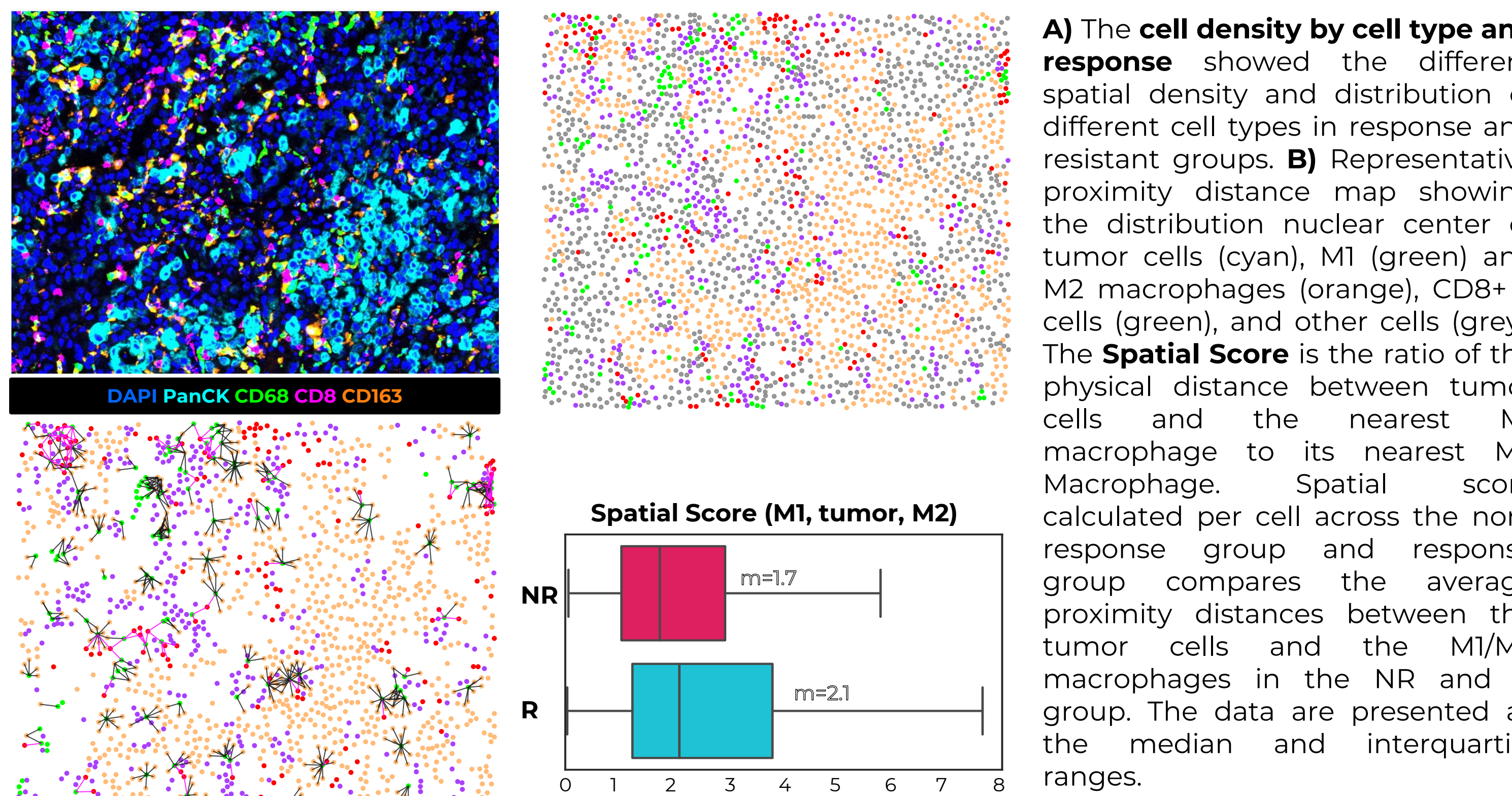


Translational to Ultrahigh-plex discovery Workflow: NSCLC core biopsies (FFPE) were phenotyped using **PhenoCode Signature M1/M2 Polarization Human Protein Panel** + PanCK in the open channel. These samples were imaged on the **Phenomager HT 2.0** platform. Serial sections were then stained with a **57-plex PhenoCode Discovery panel on the PhenoCycler-Fusion 2.0** platform using markers for cell lineage, immune activation, checkpoints, cellular energetics, and more.

A) Cell Density by Cell Type and Response

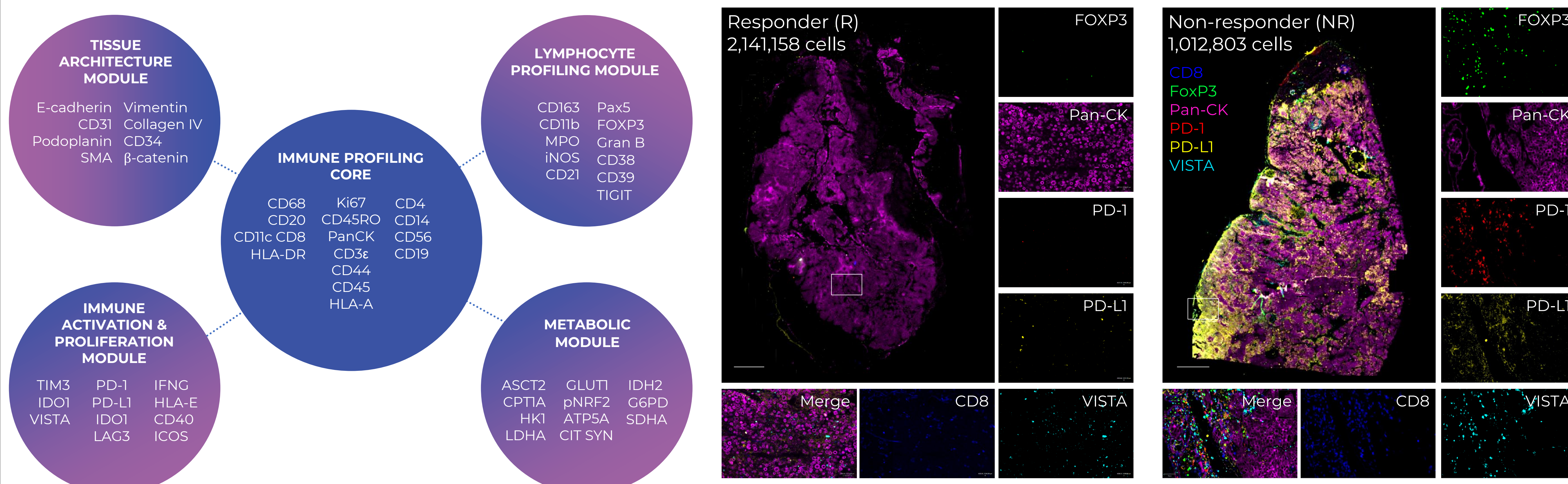


B) Spatial Score

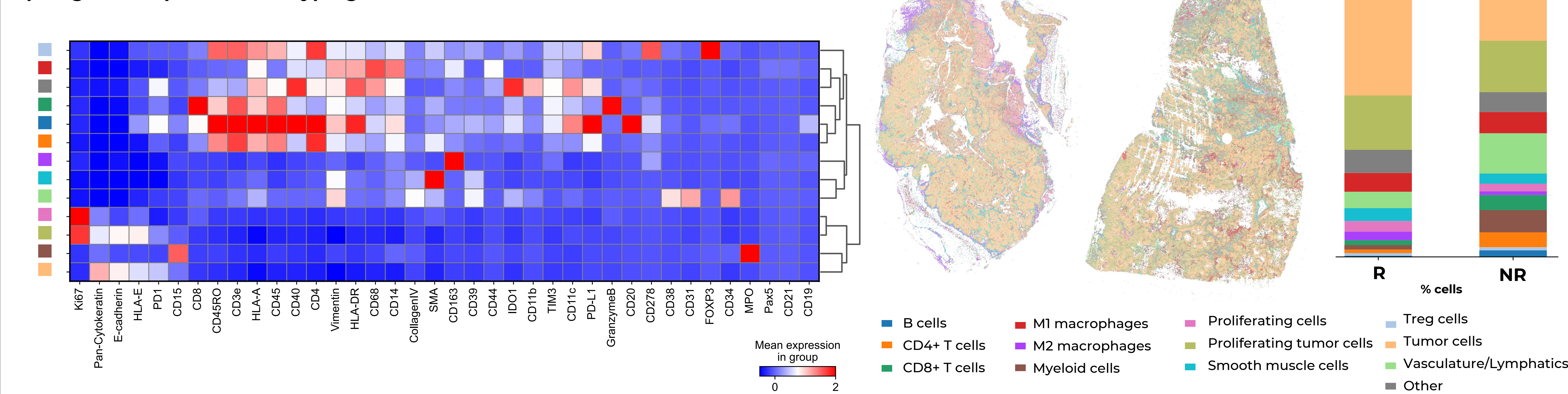


57-plex Spatial Phenotyping Identified 13 Immune Cell Populations

A) 57-plex Whole-slide Imaging and spatial phenotyping of 3.4 million cells of pretreatment biopsies



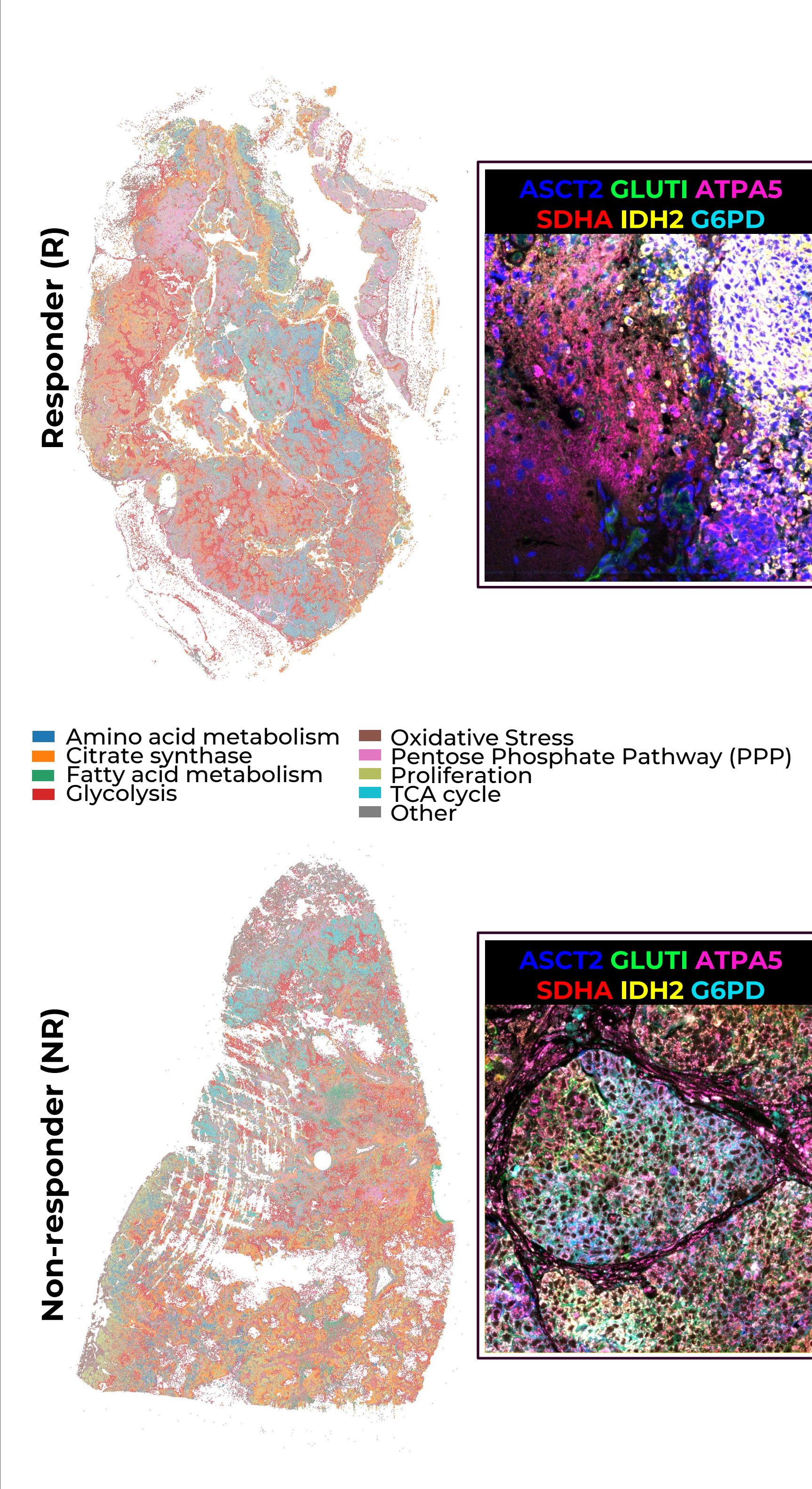
B) Single Cell Spatial Phenotyping



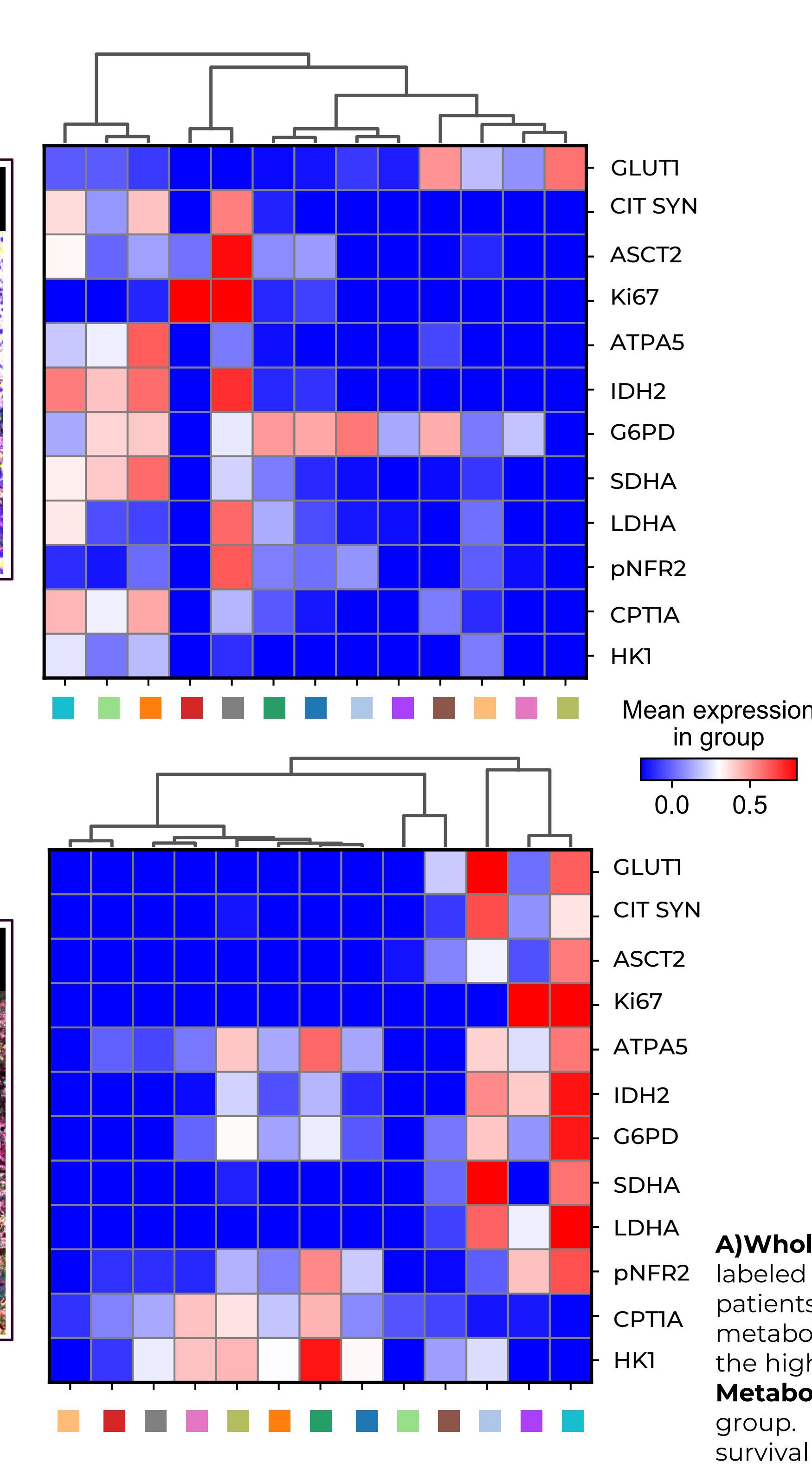
A) PhenoCycler-Fusion 2.0 (PCF 2.0) whole-slide 57-plex imaging of NSCLC tissue from different immunotherapy cohorts (biomarkers as indicated, scale bar, 2mm). The antibody panel on the left was designed for deep-phenotyping of immune cells and metabolic module to reveal cancer progression. **B) Representative Single-cell Spatial Phenotyping Application** of 3,153,961 cells in an NSCLC PR tissue. Cells are phenotyped via unsupervised clustering of biomarkers. The heatmap summarizes 13 immune cell populations. The abundance of each cell type is quantified in the accompanying stacked bar graph.

Spatial Metabolic Functional Mapping of Tumor-Associated Macrophages (M1/M2) Predicts immune response

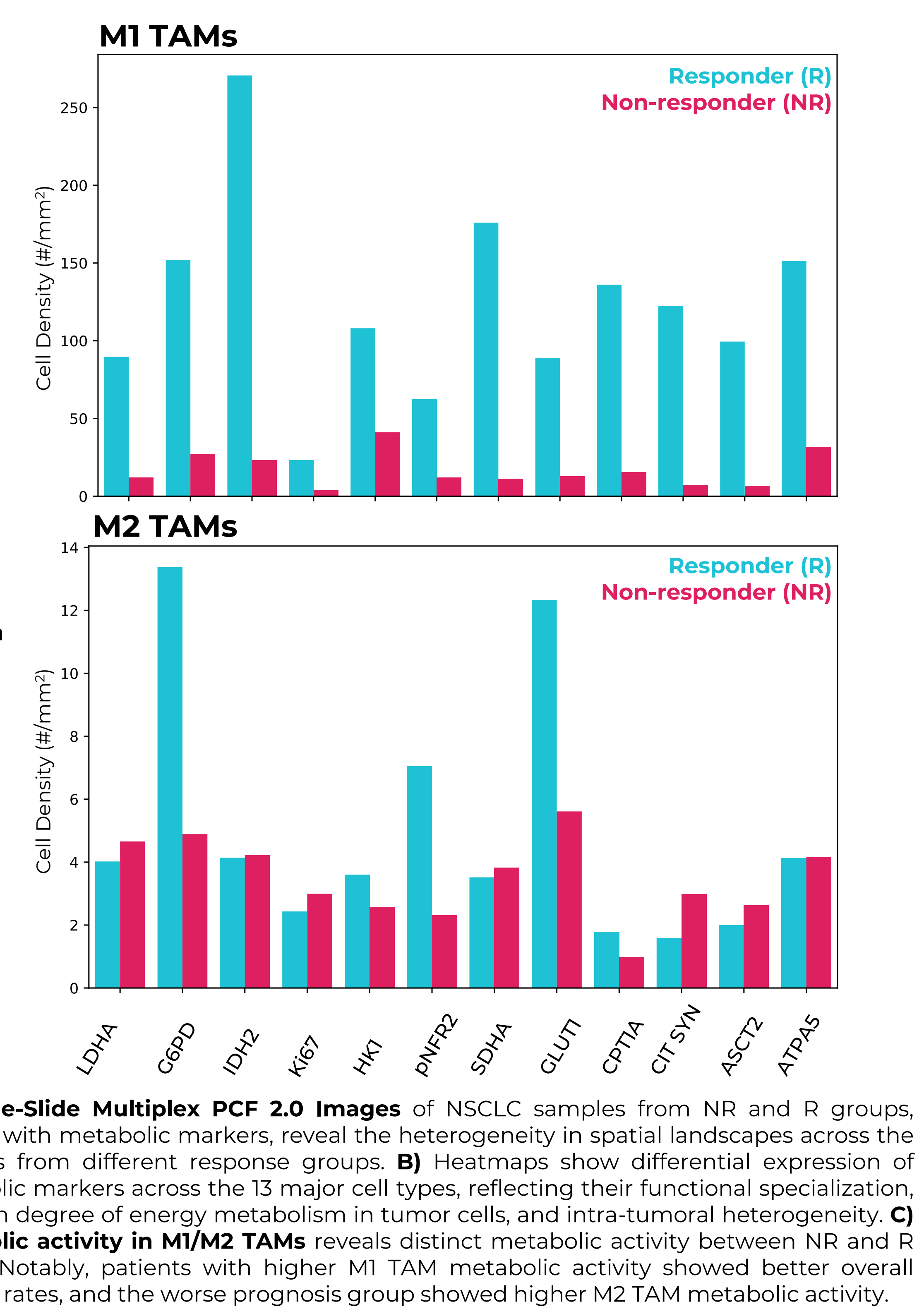
A) Metabolic Functional Phenotyping



B) Cell Type-Specific Metabolic Expression



C) Decoding Metabolic activity in Tumor-associated M1/M2s



Conclusions

- This study amounts to a uniquely comprehensive Single Cell Spatial Phenotyping analysis of pretreatment NSCLC biopsies from a single-agent Nivolumab clinical trial.
- whole-slide spatial phenotyping of macrophage immune and metabolic status revealed unique spatial distribution and metabolic features within tumor-associated macrophages (TAMs). This discovery establishes a promising predictive marker for the immune response in NSCLC.
- Our data illustrate that immune cell quantification alone may be insufficient to stratify patient cohorts with NSCLC. The identification of unique spatial signatures, such as a spatial score and the metabolic phenotyping of macrophages, may need to be performed to predict NSCLC patient response to immunotherapy better. Development of clinically relevant and highly predictive spatial signatures may require iterative cycles of discovery studies for deep spatial phenotyping and high-throughput translational studies for verification.
- This study shows how Akoya's solutions are uniquely positioned to enable discovery to translational workflows thereby accelerating the development of clinically relevant and highly predictive spatial signatures.



For Research Use Only